

House and land package.



The Camden \$354,000

539 Ullman Road, Hilbert

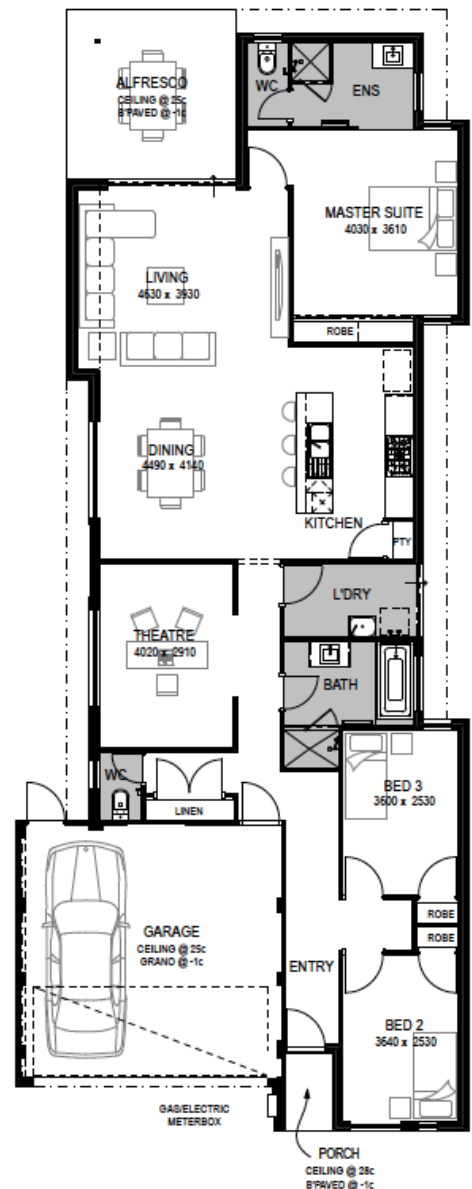


HOME SIZE	BEDROOMS	BATHROOMS	CAR SPACE
199m ²	3	2	2

Located in the heart of Hilbert on Eleventh Road, Hilbert Central Private Estate is now fully constructed and will be ready to build your new home on very soon! A family-friendly estate offering affordable, lifestyle-focussed living within the thriving City of Armadale, where you will enjoy easy, convenient access to major amenities - all the benefits of urban living, without the frantic hustle and bustle. With ONLY 60 lots on offer, an old-fashioned sense of community spirit will be embodied within this boutique private estate.

Our exclusive package includes:

- FIXED Siteworks allowance already INCLUDED
- Choice of 6 elevations
- Quality Flooring throughout
- Window blinds to all opening windows
- Air conditioning throughout
- Stone benchtops throughout the home
- Luxury Italian Bertazzoni 900mm stainless steel appliances
- Flick mixer tapware throughout
- Rain shower head to bathroom and ensuite
- Soft closing cupboards
- Glass pivot doors to showers
- Large format tiling to wet areas
- Feature internal doors
- Double sliding robes to bedrooms
- Bluepine roof timber as standard
- And so much more



Ian Harris M: 0406 436 456 E: iharris@gohomes.com.au

Visit gohomes.com.au

