

# House and land package.



## The Camden \$339,490\*



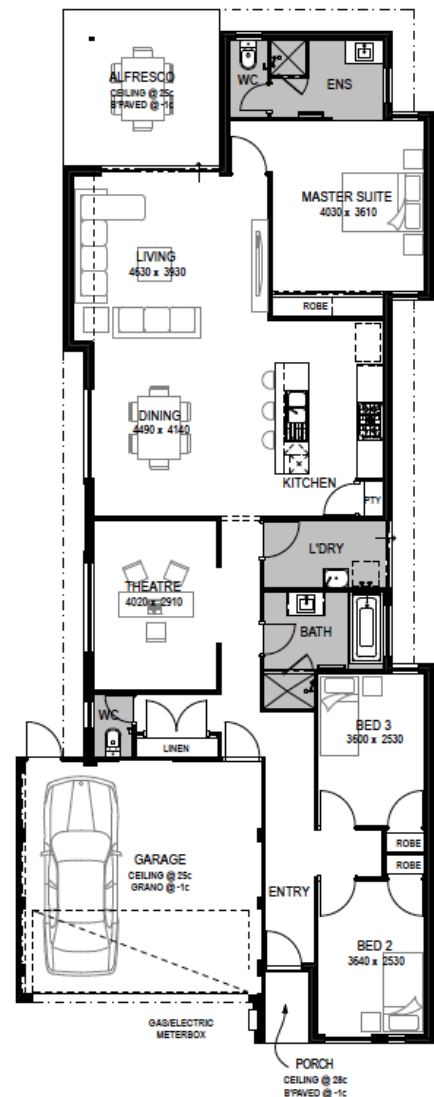
536 Ullman Rd, Hilbert

HOME SIZE	BEDROOMS	BATHROOMS	CAR SPACE
200m <sup>2</sup>	3	2	2

A family-friendly estate offering affordable, lifestyle-focussed living within the thriving City of Armadale, where you will enjoy easy, convenient access to major amenities – all the benefits of urban living, without the frantic hustle and bustle. With ONLY 60 lots on offer, an old-fashioned sense of community spirit will be embodied within this boutique private estate.

### Our exclusive package includes:

- Choice of six elevations
- Luxury wall back toilets
- Bertazonni kitchen appliances
- Flick mixer tap-ware throughout
- Technology package
- Flush fit pelmet garage doors
- Life-time structural guarantee
- Double brick contraction
- And so much more



Michael Littler M: 0412 988 001 E: [michaelli@gohomes.com.au](mailto:michaelli@gohomes.com.au)

Visit [gohomes.com.au](http://gohomes.com.au)

